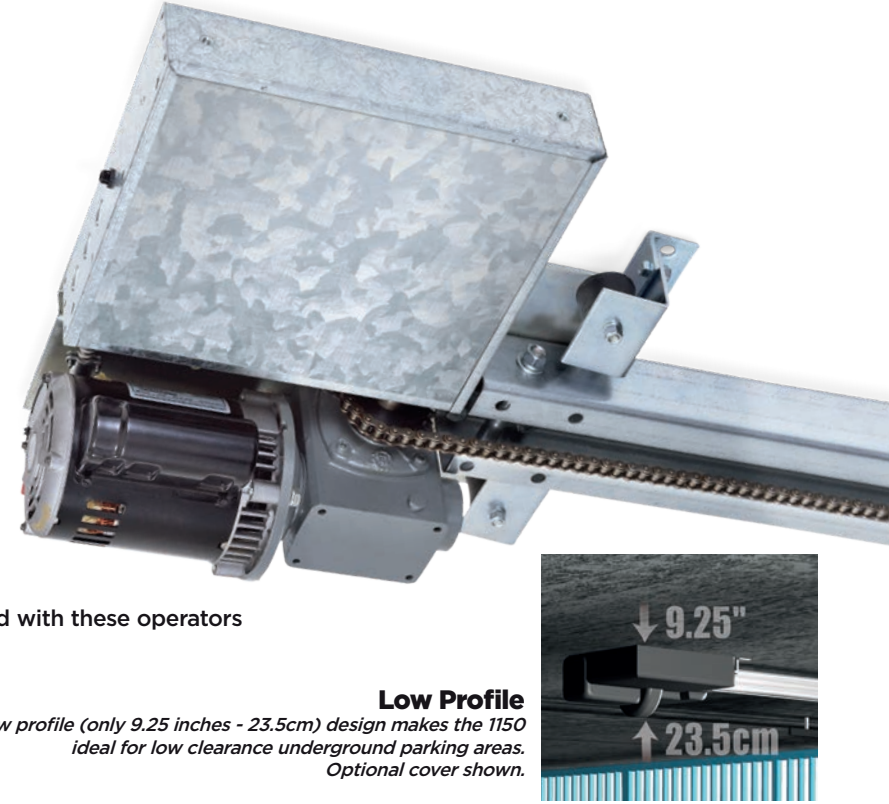


1175

Overhead AC Operator

Operators available for gate heights of 8, 10, 12 and 14 feet (2.4m, 3.0m, 3.6m and 4.3m)

- Advanced microprocessor control board
- Ports for plug-in open and reverse loop detectors (DKS loop detectors only)
- Selectable loop function (stop or reverse)
- Direct driven limit nuts for precise gate control
- Auto-close timer 1-23 sec. Timer override feature helps prevent tailgating
- External obstruction sensing devices must be used with these operators
- Gate tracker reporting output
- Keyed manual release
- Built-in power switch



Low Profile
Low profile (only 9.25 inches - 23.5cm) design makes the 1150 ideal for low clearance underground parking areas. Optional cover shown.

ACCESSORIES:



Traffic Control Spike Systems

Traffic control spikes are ideal to enforce one-way traffic direction. Always use Warning Signs with traffic spike systems. A lock-down option allows for temporary two-way traffic lanes.

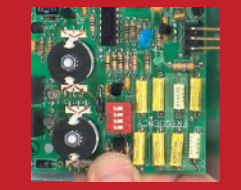
Power Supply

12 Volt DC auxiliary power supplies are available to power LED lighted arms and 12 Volt traffic signals.



Loop Detectors

Plug-in detectors (DKS only) and hard wired detectors. Single and dual channel. Pre-fabricated loops available or form your own loops.



Fan and Heater Kits

Several options for extreme conditions.



Traffic Control

Warning signs and traffic signals provide highly visible indication of one-way lane conditions and when it is safe to proceed. Signal light (red/green) is synchronized with the barrier arm.



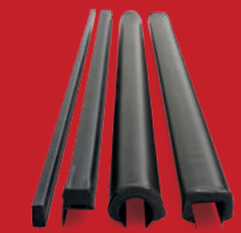
Photo-eyes

- Photo-reflective beams have a scan distance up to 45 ft. (14m)
- Includes reflector and mounting bracket
- Thru-beam photocells have a scan distance up to 100 ft. (30.48m)
- Separate sender and receiver
- Hooded metal enclosure
- Infrared beam



Reversing edges

- A variety of edge styles
- Mounting channels included
- 2-wire edges can be hard wired



Back-up Power Inverters

The Model 1000 power inverter provides backup power for a single gated access control system when primary AC power fails by converting 12 volt DC power to 120 volt AC power. This capability maintains a completely operable access control system during power outages and brown outs and is ideal for smaller applications with a single gate system.



REGIONAL SALES MANAGER LOCATIONS

DOORKING U.S.A.

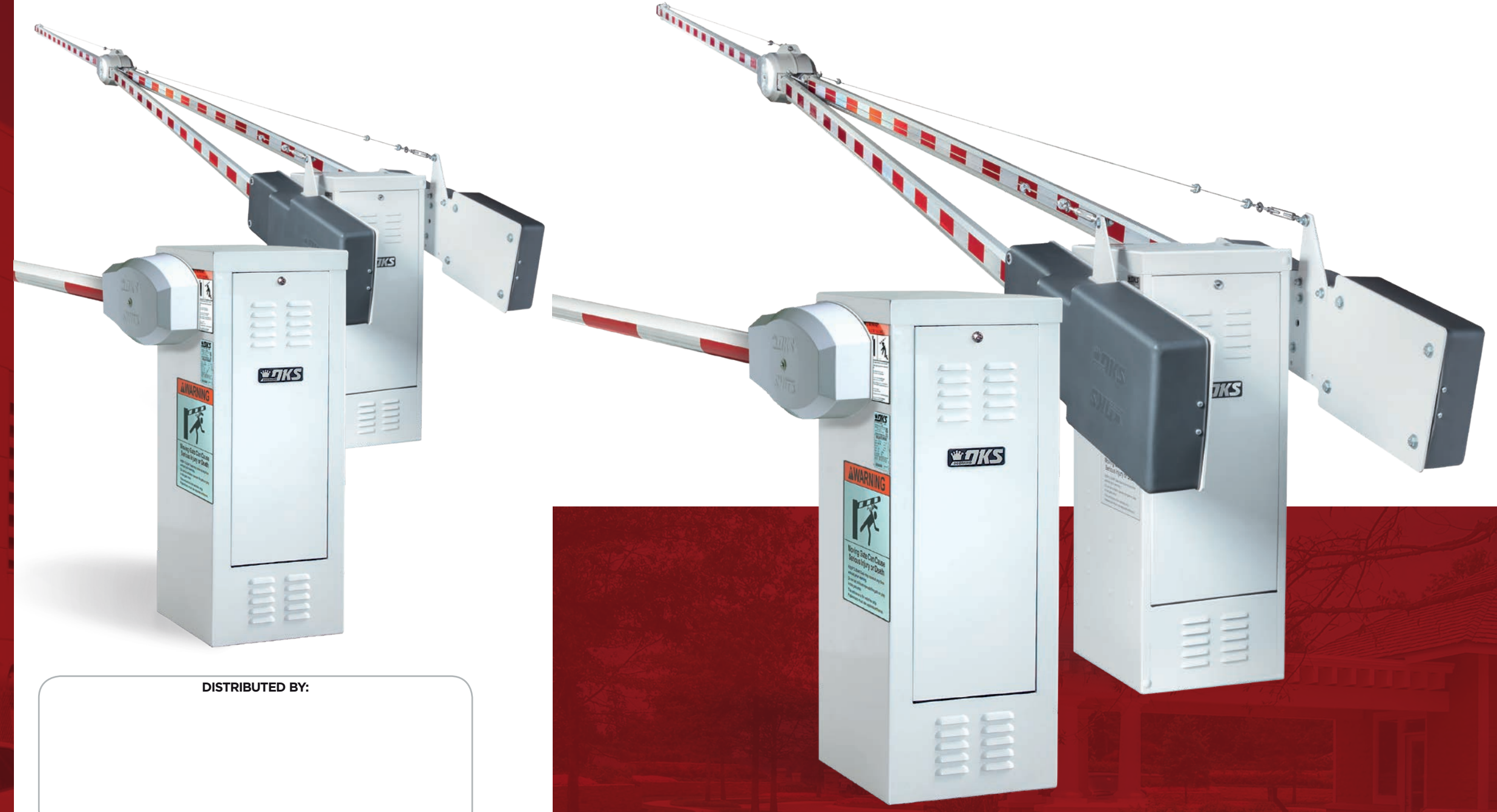
- INDIANAPOLIS, IN
- SACRAMENTO, CA
- VINELAND, NJ
- PHOENIX, AZ
- NASHVILLE, TN
- ATLANTA, GA
- DALLAS, TX
- ORLANDO, FL
- CHARLOTTE, NC
- HOUSTON, TX
- SAN DIEGO, CA
- LEHIGH VALLEY, PA
- LOS ANGELES, CA



DOORKING, INC.
Access Control Solutions since 1948
120 S. Glasgow Avenue, Inglewood, California 90301 U.S.A.
Tel: 310-645-0023 • FAX: 310-641-1586 • www.doorking.com

© 2021 All Rights Reserved. Product specifications may change without notice. Rev. 5/21

VEHICULAR TRAFFIC CONTROL



DISTRIBUTED BY:



VEHICULAR TRAFFIC CONTROL

Apartment Complex/Gated Communities • Mixed Use Buildings
Commercial/Industrial • Traffic Control • Self Storage • Maximum Security

ACCESS CONTROL SOLUTIONS

VEHICULAR TRAFFIC CONTROL

1601

Single Lane Barrier Gate Operator
The Model 1601 is for high usage single lane vehicular traffic control.

1602 Multi/Wide Lane Barrier Gate Operator

The Model 1602 is for limited use applications such as industrial sites and loading dock areas. The 1602 is used to control wide traffic lanes.

1603

Single Lane Modular Barrier Gate Operator/ Auto Spike System

The DKS 1603 modular system mechanically links the spikes to the barrier arm, and sequences with the traffic light and in conjunction with slide or swing gate operators. Surface mount spikes install easily without trenching and double as a speed bump. Flexible shaft drive keeps spikes operable and eliminates down time from breakage.

1620 Lane Barrier Add-on

Surface Mount Lane Barrier Accessory*
The DKS Lane Barrier Accessory System is an easy add-on to the popular 1601 Barrier Gate Operator. The Lane Barrier is ideal in applications where a higher degree of vehicle traffic control is desired, but without the expense of bollards, wedges or crash beams - making it ideal for apartment communities, gated condominiums, car rental agencies, parking lots and toll booths.

*This Lane Barrier System is not crash rated. It is intended to provide a formidable barrier to help prevent passenger vehicles and light-duty trucks from driving through a controlled traffic lane.

SPECIFICATIONS

ALL MODELS

- Magnetic limit control
- Ports for plug-in loop detectors (DKS loop detectors only)
- Automatic sequencing inputs for use with slide and swing gate operators
- Up input memory
- Down memory
- Two convenience outlets
- Gate tracker reporting output
- Programming switches
- Built-in power On/Off switch
- Left or right hand mount

1601 ONLY

- Single lane (14 ft. max - 4.3m) vehicular traffic control
- 1/2 HP continuous-duty motor
- High traffic commercial and industrial applications
- 40:1 gear-box running in a continuous oil bath
- Arm rotates 90° in approximately 2.5 secs
- 360° gear box rotation provides for smooth operation, even wear across the entire gear-box, and increases the life span of the operator

1602 ONLY

- Wide traffic lanes up to 27 ft. wide (8.2m)
- 1 HP continuous-duty motor
- Designed for commercial and industrial applications
- Uses a counter-balanced three-piece wishbone style arm assembly, and is used with the extended arm barriers
- 60:1 gear-box running in a continuous oil bath
- Arm rotates 90° in approximately 5.5 secs

1603 ONLY

- Retractable spike sections are available in 3 ft. (.9m) lengths
- 1/2 HP continuous-duty motor
- 18 inch (45.7cm) tunnel sections available
- A traffic signal and/or warning sign is required
- 40:1 gear-box running in a continuous oil bath
- Arm rotates 90° in approximately 2.5 secs

1620 LANE BARRIER ONLY

- Surface mount for quick, easy installation
- Fast speed - raises and lowers in approximately 2.5 seconds
- Simple mechanical linkage to DKS 1601 Barrier Gate Operator keeps Barrier Arm and Lane Barrier in sync - no separate motors or hydraulic valves to worry about
- Integrated steel barrier
- Includes surface mount steel speed bump to help control traffic speed and to recess the lane barrier arm

	1601 14 ft (4.3m)	1602 27 ft (8.2m)	1603 14 ft (4.3m)	1620* 14 ft (4.3m)
ARM LENGTH MAXIMUM†				
FOLDING ARM KIT (LOW CEILINGS)	✓	-	✓	-
HORSE POWER				
1/2 HP	✓	-	✓	✓
1 HP	-	✓	-	-
LOOP DETECTOR PORTS	✓	✓	✓	✓
GATE TRACKER	✓	✓	✓	✓
CONVENIENCE OPEN PACKAGE	-	✓	✓	-

† 1620 maximum steel barrier opening.

Model	Usage		Cycle Time	Barrier Arm				
	High Use Commercial	Limited Use Industrial		Length	Type	Folding Kit	Breakaway	Lighted
1601	✓	✓	90° 2.5 sec	14 Ft. (4.3m)	Aluminum	Yes	Yes	Yes
				14 Ft. (4.3m)	Wood	Yes	No	No
				12 Ft. (3.6m)	Plastic	Yes	No	No
1602	-	✓	90° 5.5 sec	20 Ft. (6.1m)	Wood	No	No	No
				20 Ft. (6.1m)	Aluminum	No	No	Yes
				24 Ft. (7.3m)	Aluminum	No	No	Yes
				27 Ft. (8.2m)	Aluminum	No	No	Yes
1603	✓	✓	90° 2.5 sec	14 Ft. (4.3m)	Aluminum	Yes	No	Yes
1620*	✓	✓	90° 2.5 sec Powered by 1601	9 Ft. (2.7m)	Steel	No	No	No
				10 Ft. (3.0m)	Steel	No	No	No
				12 Ft. (3.6m)	Steel	No	No	No
				14 Ft. (4.3m)	Steel	No	No	No

* 1620 Steel barrier.

PARKING CONTROL A SYSTEM FOR ALL APPLICATIONS

Barrier Arm Options

Aluminum and wood arms come in 14-foot (4.3m) lengths. Plastic arm comes in 12-foot (3.6m) lengths.

For low headroom requirements, folding arm kits are available for all arm types.

Breakaway arm available for the 1601 Model.

Lighted 14 ft (4.27m) aluminum arms for enhanced safety and increased visibility.

3-piece counter-balanced long arm applications up to 27-feet (8.2m) for the 1602 model only.

20-feet (6.1m) (wood or aluminum)

24-feet (7.3m) (aluminum only)

27-feet (8.2m) (aluminum only)

1602 27-ft. (8.2m) aluminum arm



Lane Barrier
surface mount accessory.



Arm Mounts Left or Right

Operators are designed so that they can be mounted on either the left or right hand side of the roadway.



DKS Pedestrian Protection System

It's aware - even when they're not.



Octagonal Lighted Signal Arm
Light the way for customers to exit easily and safely with signals and sensors.



Breakaway Arm Option
Reduce maintenance costs. Allows arm to swing out of the way when struck by a vehicle. Easily reset by simply snapping the arm back into place.



Folding Arm Kits
For low ceiling applications, folding arm kits are available for the aluminum, wood and plastic arms used with models 1601 and 1603.